

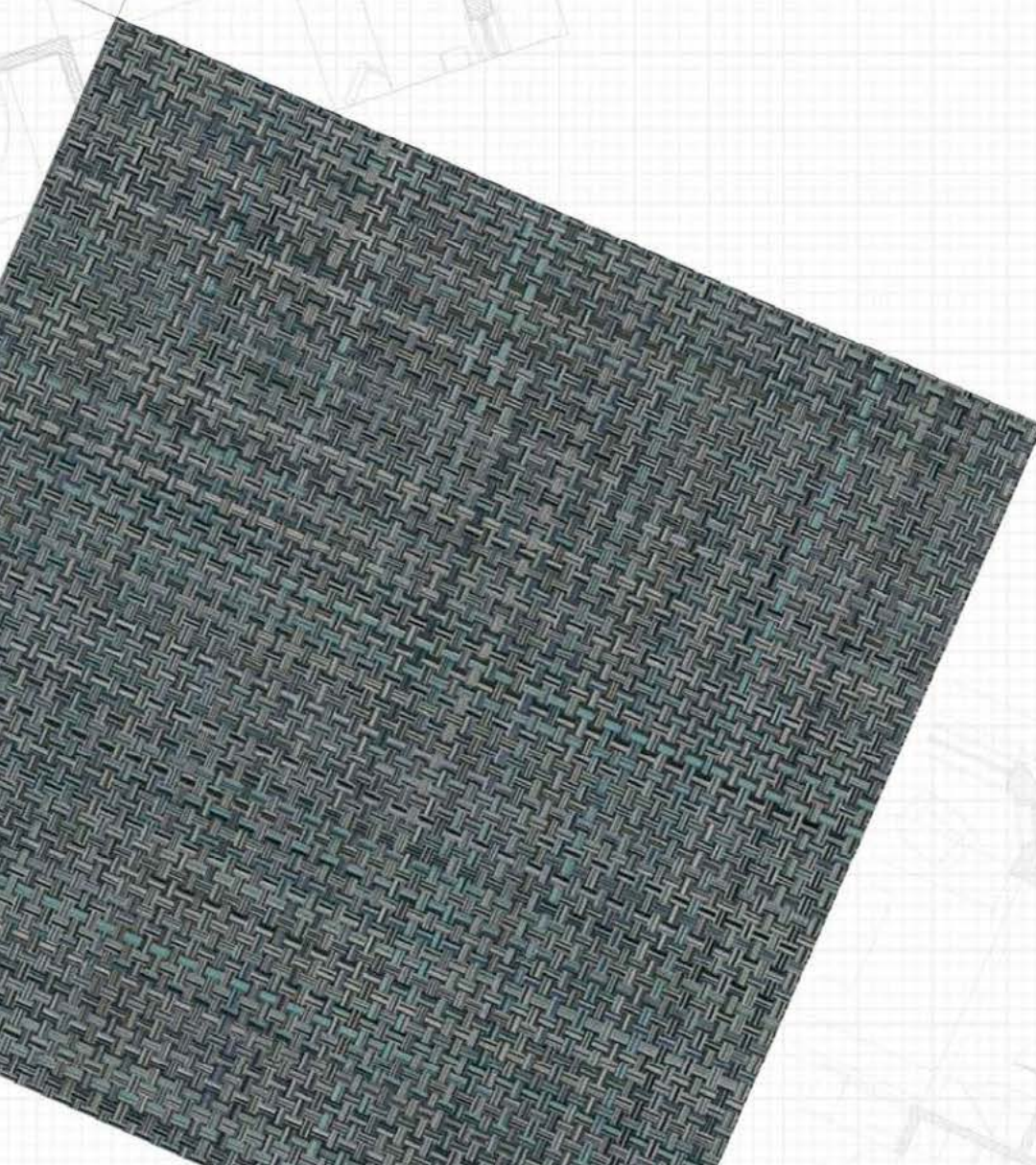


UNIDECO

2016 - 2017 KDF We floor nature for you

UNIDECO, the high quality interior finish

UNIDECO is dedicated to make the balance and harmony between human and space considering from the functional space to the high quality space.



Make your daily life more special

Unideco adds specificity where you walk.
The space becomes more beautiful with Unideco's unique technology.
Unideco fascinates customer with eco friendly floor. Unideco is a leader of high quality interior.
Experience the special moment of your life at resident, commercial and educational space.










HUMAN & NATURE

Unideco always studies and thinks about happy space.
Unideco creates beautiful future space.

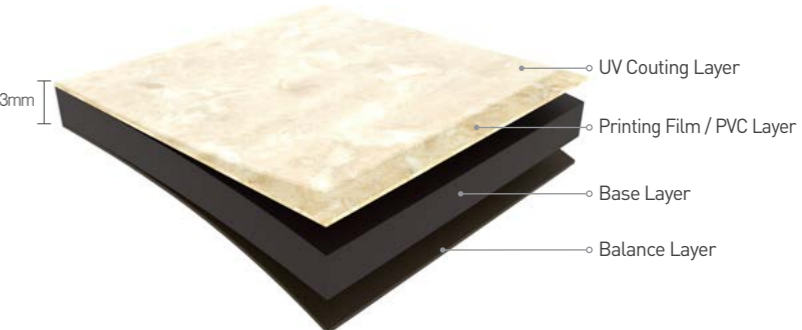


Product Features

-  Creates special space with differentiated design and pattern
-  Providing high stability and comfortable walking
-  Strong at dent and scratch
-  Easy cleaning and maintenance with special surface treatment
-  Maintaining eco friendly space with no harmful chemicals



Layer Composition



Morning Calm Acoustic

Bring your living space more peaceful and quiet with UNIDECO "Morning Calm"

Dimensions 5.0(T) x 177.8(W)mm X 1219.2(L)mm
 Dimensions 5.0(T) x 228.6(W)mm X 1219.2(L)mm

Packing 10pcs/2.17M²
 Packing 8pcs/2.23M²

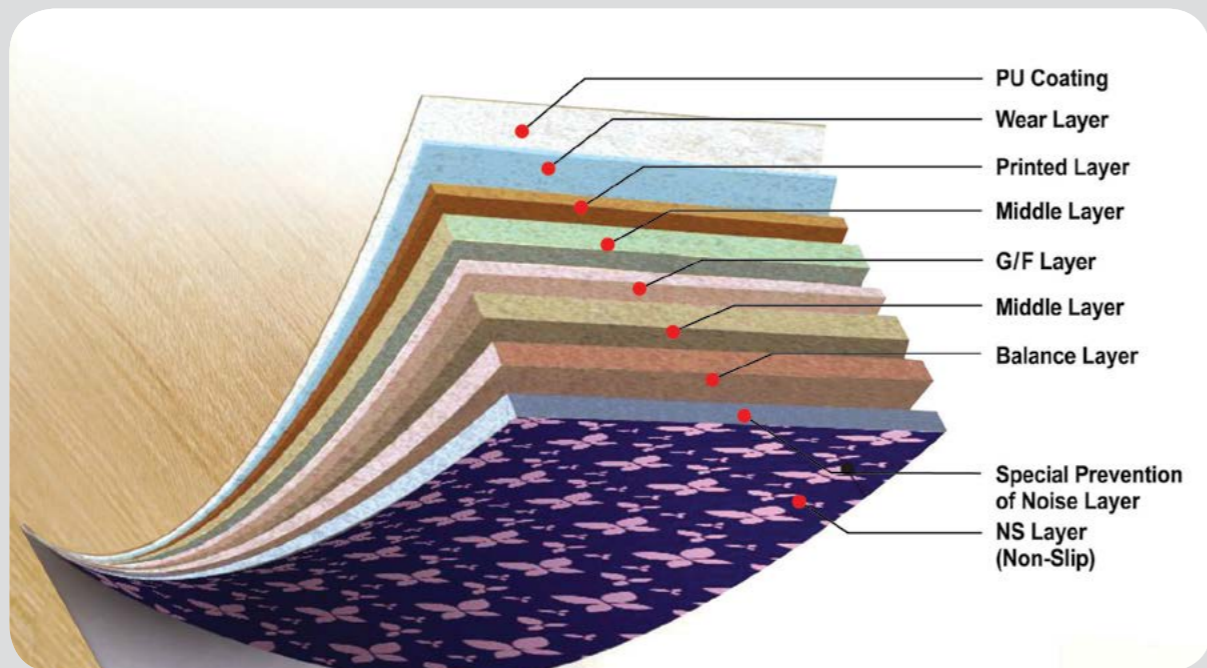
Style your home with the natural elegance of wood specialized technology of "Acoustic" function. Sounds can be stressful in our environment, so UNIDECO Acoustic is the key when it comes to reduce the noise between the stories in any residential places.

Characteristics

- Excellent dimensional stability using glass fiber layer.
- Cost effective(No Glue Down) way to improve the appearance in residential environment.
- Excellent noise reduction.
- Fully recyclable.
- Environment-Friendly vinyl floor tiles.
- Excellent ability to absorb noise



KW 6021



Loose Lay Tile-NS



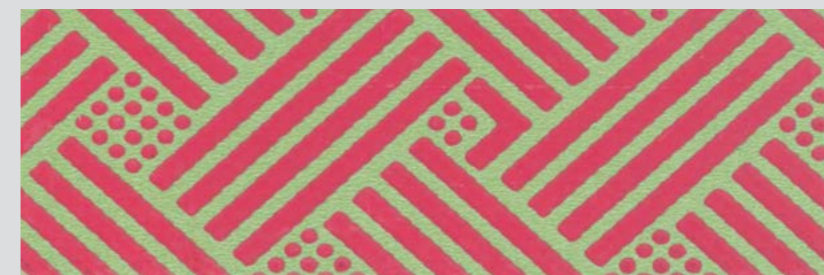
Environment-friendly Luxury Vinyl Tiles
 (No need of adhesives)



Dimensions 5.0(T) x 470(W)mm X 470(L)mm
 Packing 10pcs/2.21M²

Dimensions 5.0(T) x 177.8(W)mm X 1219.2(L)mm
 Packing 10pcs/2.17M²

Dimensions 5.0(T) x 228.6(W)mm X 1219.2(L)mm
 Packing 8pcs/2.23M²



- Non-woven fiberglass layer
- Easy installation
- With anti slip backing
- The supreme durability
- Environment-friendly vinyl floor tile (No need of adhesives)
- Fully recyclable

KW 6725

ClicknLoc



KW 6072

KW 6053

Style your home with the natural elegance of wood using the uniquely designed UNIDECO Click edge profile to give enduring, flawless finish every time. There is no need for adhesive, tools or professional installation. It couldn't be simpler.

Your UNIDECO Click floor, designed with Nano-Ceramic protective properties, is tough and resilient enough for today's busy lifestyle and homes-guaranteed for 25 years.

- 4 sided Micro Bevel
- Non-woven fiberglass layer
- 15 year commercial warranty
- 25 year residential warranty

- Anti-bacterial
- No underlay or glue required
- 2 coats UV

Thickness	Size (W x L)
4.3T	176 X 940mm 169 X 1,210mm
5T	
6T	

Antique Wood

Dimensions 3.0(T) x 184(W)mm X 950(L)mm Packing 19pcs/3.32M²
 Dimensions 3.0(T) x 177.8(W)mm X 1219.2(L)mm Packing 15pcs/3.25M²



KW 5071



NEW

KW 6154

NEW



KW 5321



NEW

KW 6221

NEW



KW 6141



NEW

KW 6222

NEW



KW 6151



NEW

KW 6223

NEW



KW 6153



NEW

KW 6241

NEW

Antique Wood

Dimensions 3.0(T) x 184(W)mm X 950(L)mm Packing 19pcs/3.32M²
 Dimensions 3.0(T) x 177.8(W)mm X 1219.2(L)mm Packing 15pcs/3.25M²



KW 6061



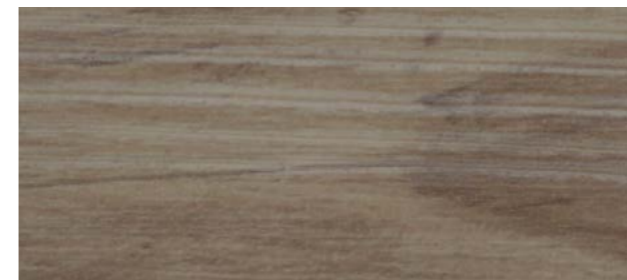
KW 6062



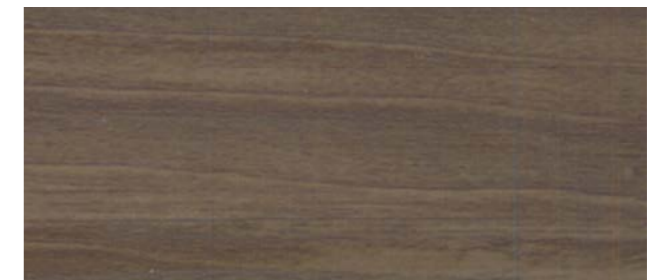
KW 6063



KW 6031



KW 6032



KW 6033



KW6032

Antique Wood

Dimensions 3.0(T) x 184(W)mm X 950(L)mm Packing 19pcs/3.32M²
Dimensions 3.0(T) x 177.8(W)mm X 1219.2(L)mm Packing 15pcs/3.25M²



KW6045



KW 6045



KW 6046



KW 6047



KW 6723

Antique Wood

Dimensions 3.0(T) x 184(W)mm X 950(L)mm Packing 19pcs/3.32M²
Dimensions 3.0(T) x 177.8(W)mm X 1219.2(L)mm Packing 15pcs/3.25M²



KW 6051



KW 6052



KW 6053



KW 6071



KW 6701



KW 6731



KW 6702



KW 6733



KW 6724

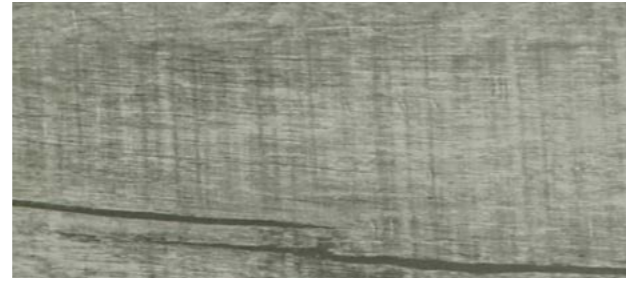
Antique Wood

Dimensions 3.0(T) x 184(W)mm X 950(L)mm Packing 19pcs/3.32M²
 Dimensions 3.0(T) x 177.8(W)mm X 1219.2(L)mm Packing 15pcs/3.25M²



KW6311

NEW



KW6321

NEW



KW6312

NEW



KW6322

NEW



KW6313

NEW



KW6323

NEW



KW6314

NEW



KW6324

NEW



KW6315

NEW



VG 02

NEW

Natural Wood

Dimensions 3.0(T) x 184(W)mm X 950(L)mm Packing 19pcs/3.32M²
 Dimensions 3.0(T) x 177.8(W)mm X 1219.2(L)mm Packing 15pcs/3.25M²



KW 6725

NEW



KW 5431

NEW



KW 6726

NEW



KW 5432

NEW



KW 1120

NEW



KW 5433

NEW



KW 6551

NEW



KW 5434

NEW



KW 5411

NEW



KW 5412

NEW

Natural Wood

Dimensions 3.0(T) x 184(W)mm X 950(L)mm Packing 19pcs/3.32M²
Dimensions 3.0(T) x 177.8(W)mm X 1219.2(L)mm Packing 15pcs/3.25M²



KW 6001



KW 6002



KW 6003



KW 6011



KW 6012



KW 6013



KW6013

Natural Wood

Dimensions 3.0(T) x 184(W)mm X 950(L)mm Packing 19pcs/3.32M²
Dimensions 3.0(T) x 177.8(W)mm X 1219.2(L)mm Packing 15pcs/3.25M²



KW5012



KW 5011



KW 5012



KW 5013



KW 5015

Natural Wood

Dimensions 3.0(T) x 184(W)mm X 950(L)mm Packing 19pcs/3.32M²
Dimensions 3.0(T) x 177.8(W)mm X 1219.2(L)mm Packing 15pcs/3.25M²



KW5016



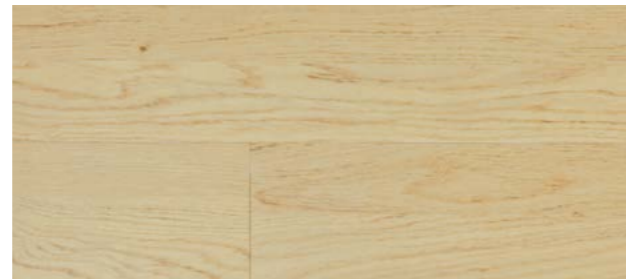
KW 5016



KW 5104



KW 5106



KW 5121



KW 5025



KW 5123

Natural Wood

Dimensions 3.0(T) x 184(W)mm X 950(L)mm Packing 19pcs/3.32M²
Dimensions 3.0(T) x 177.8(W)mm X 1219.2(L)mm Packing 15pcs/3.25M²



KW 6021



KW 6022



KW 6023



KW 6714



KW6023



KW 5027



KW 6016



KW 6721

Carpet Tiles

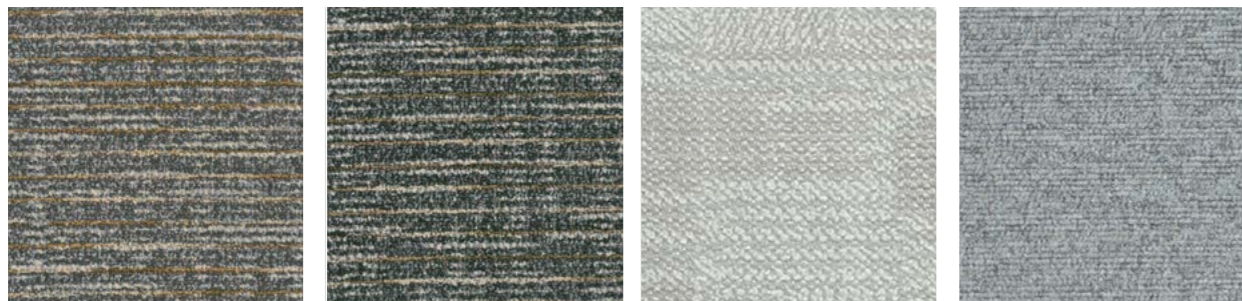
Dimensions 3.0(T) x 470(W)mm x 470(L)mm Packing 15pcs / 3.31M²



KC 1241



KC 1272 **NEW** KC 1273 **NEW** KC 1274 **NEW** KC 1282 **NEW**



KC 1283 **NEW** KC 1284 **NEW** KC 1221 KC 1241



KC 1243 KC 1201 KC 1261

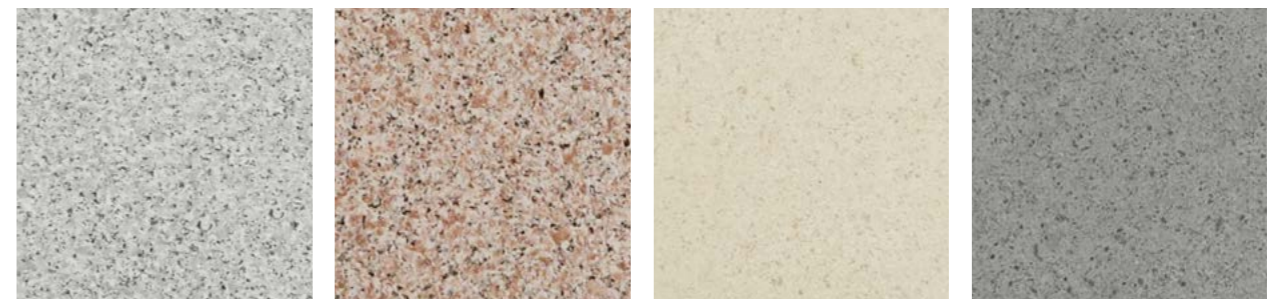
These small sample chips can be different from real products in colors and feelings

Granite Tiles

Dimensions 3.0(T) x 470(W)mm x 470(L)mm Packing 15pcs / 3.31M²



KG1823



KG1821 **NEW** KG1823 **NEW** KCM1712 **NEW** KCM1713 **NEW**

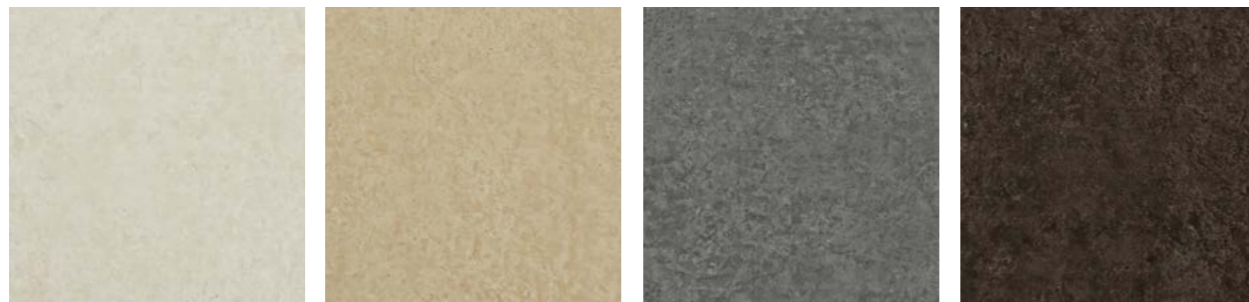
These small sample chips can be different from real products in colors and feelings

Marble Tiles

Dimensions 3.0(T) x 470(W)mm x 470(L)mm Packing 15pcs / 3.31M²



KM3121



KM3121 **NEW** KM3122 **NEW** KM3123 **NEW** KM3124 **NEW**



KM3131 **NEW** KM3133 **NEW** KM 3201 **NEW** KCM 1601

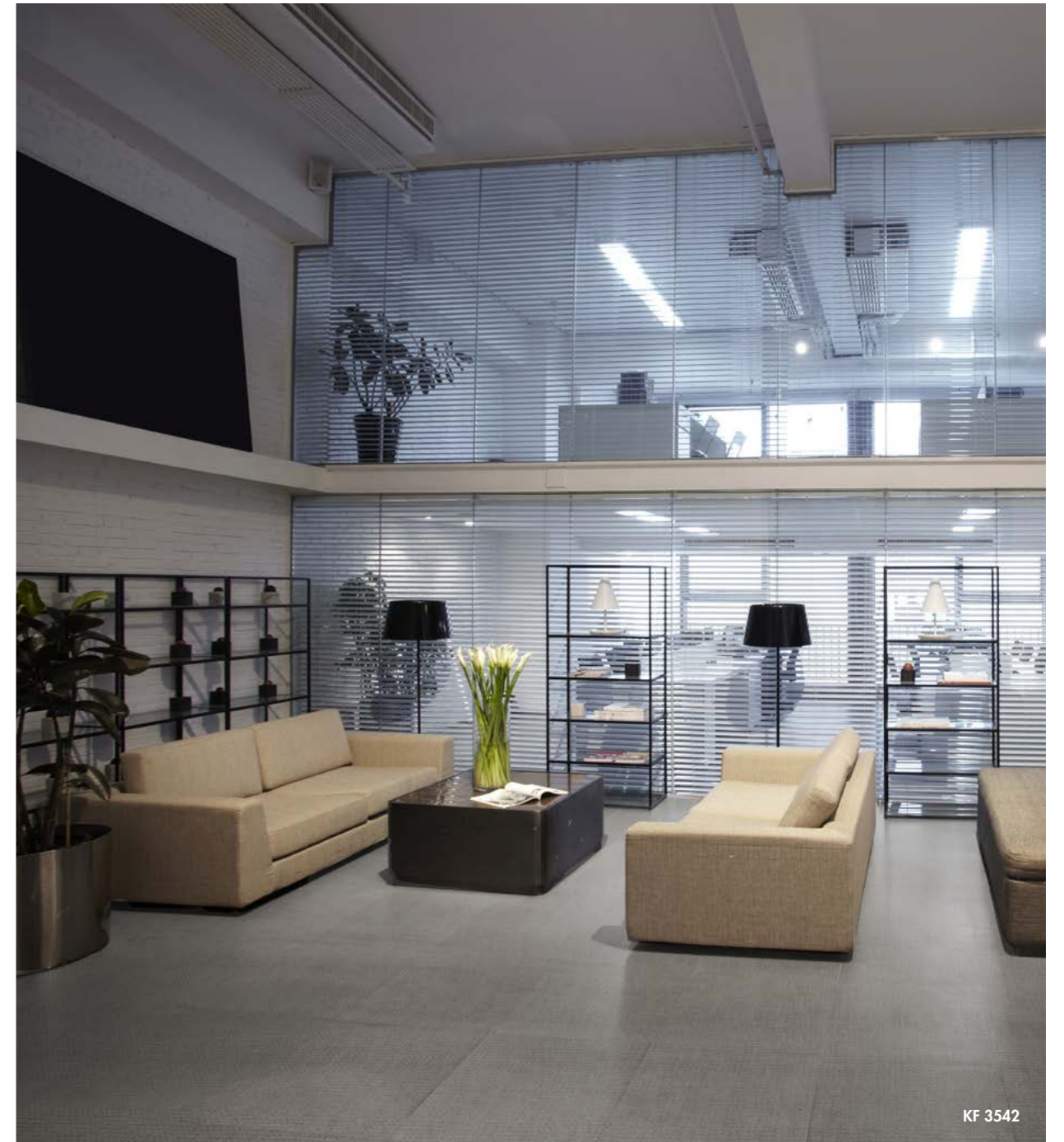


KCM 1611

These small sample chips can be different from real products in colors and feelings

Fabric Tiles

Dimensions 3.0(T) x 470(W)mm x 470(L)mm Packing 15pcs / 3.31M²



KF 3542



KF3531 **NEW** KF3532 **NEW** KF3541 **NEW** KF3542 **NEW**

These small sample chips can be different from real products in colors and feelings

Abstract Tiles

Dimensions 3.0(T) x 470(W)mm x 470(L)mm Packing 15pcs / 3.31M²



KS 3401



KS 3402



KCT 2101



KCT 2103



KT 2701



KT 2703



KMT 1411



KMT 1412



KCT 2301



NEW KCT 2302

NEW

These small sample chips can be different from real products in colors and feelings

Intallation & Maintenance

Preparations

1. The surface of the floor must be completely dry. Please note that even though the floor may appear dry, it may still retain moisture. Moisture testing is a mandatory step in subfloor preparations.
2. In newly constructed buildings, it is necessary to dry the flooring surface for 7 to 14 days prior to application to ensure that no moisture is retained in cement surfaces.
3. Any polish, paint, dirt, etc. must be completely removed from the floor before installation. Dry mop and sweep the entire floor to remove surface sand, soil, and debris.
4. Ensure that the floor surface is flat and level. Use a scraper to flatten the floor surface or a putty knife to remove gum and/or labels.
5. Maintain the room temperature above 15°C (59°F) before installation. Adhesive and flooring products must be kept in the same environment for at least 24 hours before installation begins.
6. Use only UNIDECO recommended adhesives

Installation

1. Prepare all rulers, cutters, adhesives, spreaders, and compass dividers before commencing work.
2. Check that all application products are of the same batch/lot number.
3. Find the exact center of the floor by marking vertical and horizontal lines across the floor.
4. Measure the squareness of the marked lines, and then start applying adhesives on the first quarter of the marked floor space.
5. Work on small portions of the floor at a time, and apply adhesives accordingly. Optimum usage of adhesive is 0.3 to 0.45kg per square meter.
6. Approximately 20 to 30 minutes after applying adhesive, lay the flooring products.
7. Keep a distance of 1 mm from the wall and the edge of the flooring products. Press products down firmly so that the product lies flat on the ground.
8. As the adhesives are highly flammable, avoid any contact with sparks or open flames.
9. As the adhesives dry quickly, remove excess adhesive immediately by using alcohol or alkali water.

Maintenance

1. In order to allow the flooring adhesives time to cure, restrict traffic and do not move furniture onto a newly installed floor for at least 24 hours after installation. Additionally, allow at least 3 days after installation before washing a newly tiled floor.
2. Be careful not to put any dents or marks on the floor when moving heavy furniture.
3. Furniture polish and/or rubber supports may leave stains on the floor surface over a long period of time. Check the bottom of furniture to ensure it is clean before moving it on to the new floor.
4. The application of surface dressing is a function of the floor usage. Under high traffic conditions, the dressing should be stripped and reapplied every one or two months. However, under general household conditions, this may only need to be done once every six months.
5. When removing stains and polish, do not use strong solvents or household cleaning fluids. Instead, use widely known alkali water based floor polish removers and cleaner.



2016 - 2017 KDF We floor nature for you



110-3, Sinbong-gil, Yeongin-myeon, Asan-si, Chungcheongnam-do, Korea www.ikdf.co.kr
Tel. 82-41-549-0311~3 | Fax. 82-41-549-0318