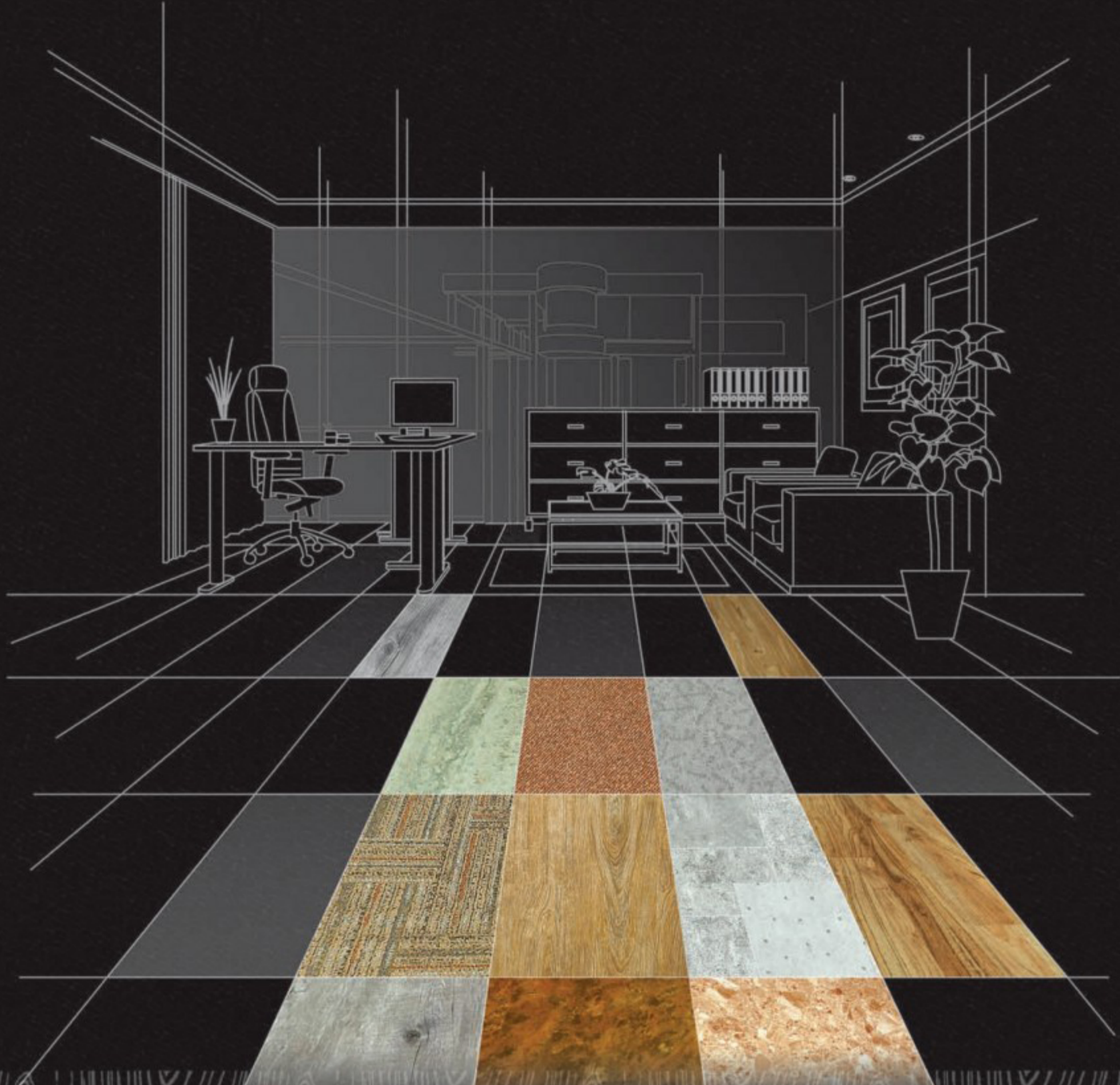


www.ikdf.co.kr



2014-2015 KDF We floor nature for you

UNIDECO





자연이 숨쉬는 친환경 바닥장식재
고품격 차별화된 공간을 유니데코가 만들어 갑니다.



Smart flooring solution with **UNIDECO**



Contents



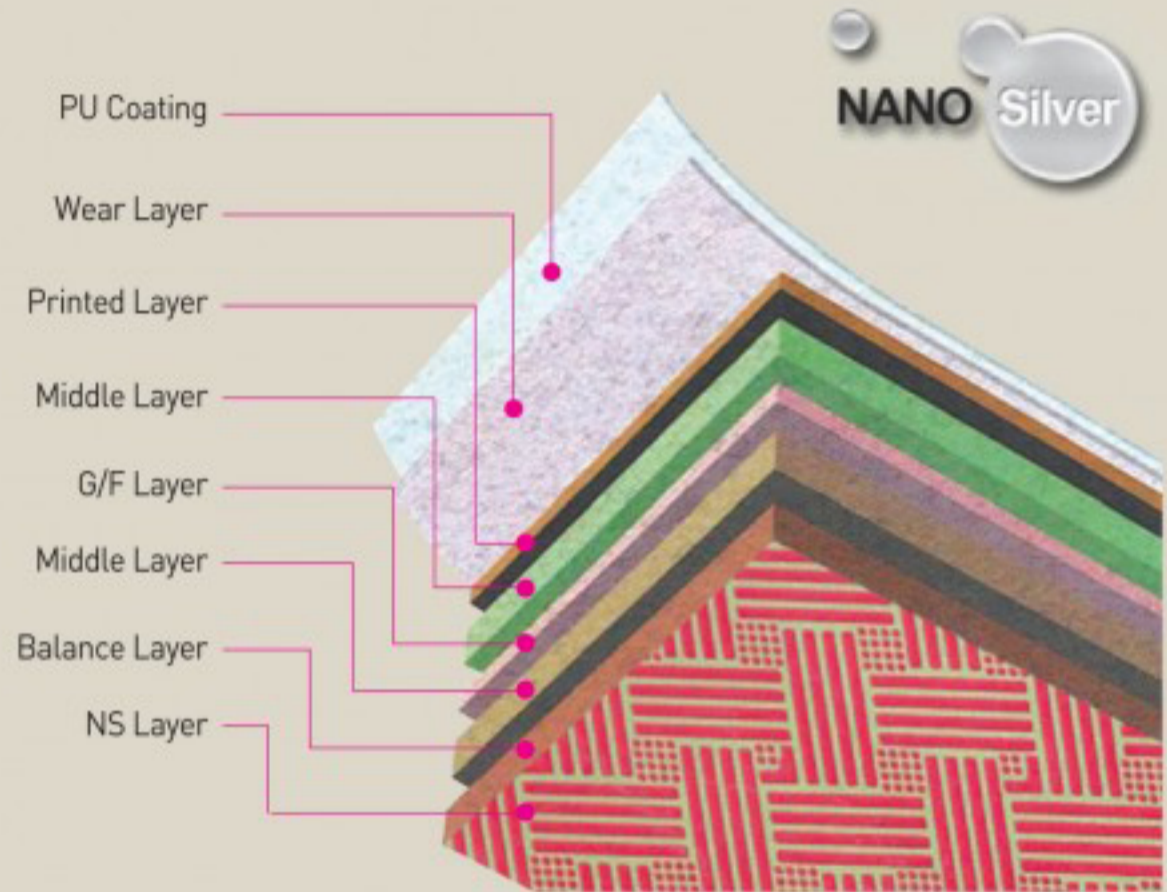
04	Loose Lay Tile-NS / OA Tile
05	Click / House Tile
06	Antique Wood
09	Fine Grain Wood
11	Stone
12	Abstract
13	Carpet
14	Product Specification & Technical Date

Loose Lay Tile-NS

Environment-friendly luxury vinyl tiles (No need of adhesives)



KW 6052



- With glass fiber layer
- With anti slip backing
- Environment-friendly vinyl floor tiles (No need of adhesives)
- Easy installation
- The supreme durability
- Fully recyclable

Dimensions 5.0(T) x 470(W) x 470(L)mm Packing 10pcs / 2.21m²
 Dimensions 5.0(T) x 7"(W) x 48"(L)mm Packing 10pcs / 2.17m²

OA Tile

특별한 공간에 적합한 기능을 부여한 타일

Dimensions 5.0(T) x 500(W) x 500(L)mm Packing 13pcs / 3.25m², Packing 10pcs / 2.50m²
 Dimensions 3.0(T) x 470(W) x 470(L)mm Packing 15pcs / 3.31m²

컴퓨터 등 전자기기가 많은 사무실, 인텔리젠트빌딩, 학교, 연구소, 전산실 등 마감재료로 적합한 타일입니다.

KDF manufacture and supply ANTI STATIC LVT. It is ideal for installation in the area where a computer room, computer lab or any kind of sensitive electrical equipment is existed.

KDF offers products with 7 best colors for such area to support your job condition. For more information, please contact our sales team.

*주문시 생산이 가능한 제품입니다. (적용모델 : OA 표시 제품)



KF 3501



KW 6072

KW 6053

 Dimensions

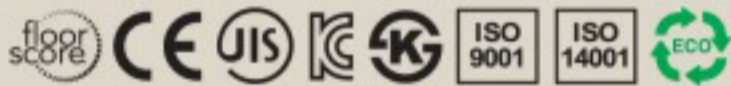
Thickness	Size(W×L)
4.3T	<ul style="list-style-type: none"> • 176×940mm • 169×1,210mm
5T	
6T	

ClicknLoc!



Style your home with the natural elegance of wood using the uniquely designed UNIDECO Click edge profile to give enduring, flawless finish every time. There is no need for adhesive, tools or professional installation. It couldn't be simpler.


Your UNIDECO Click floor, designed with Nano-Ceramic protective properties, is tough and resilient enough for today's busy lifestyle and homes-guaranteed for 25 years.



- 4 sided Micro Bevel
- Non-woven fiberglass layer
- 0.5mm Micro-Ceramic wear layer
- 2 coats UV
- Nano-Silver antibacteria
- No underlay or glue required
- 15 years commercial warranty
- 25 years residential warranty

House Tile

온돌에 강한 PVC마루

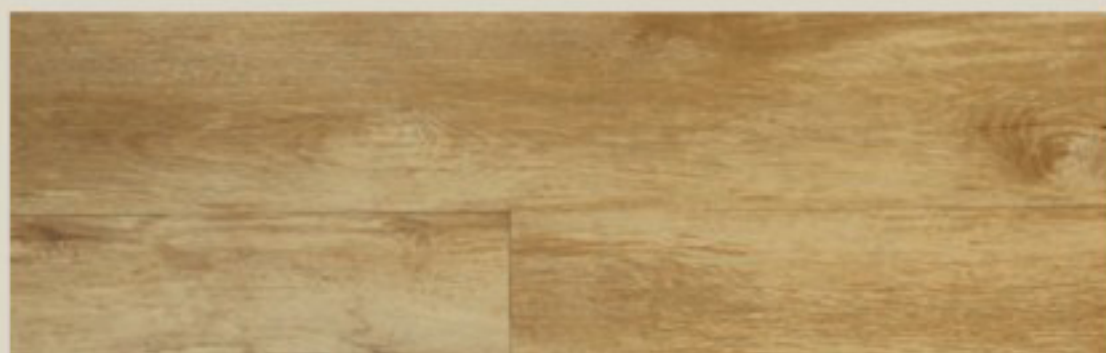
 Dimensions 3.0(T) × 184(W) × 950(L)mm Packing 19pcs / 3.32m²



특수공법적용으로 열과 습기에 대한 변형(수축/팽창)을 최소화하여 온돌 난방환경의 주거공간에 가장 적합한 바닥재입니다.

For the area where under floor heating system has been installed, KDF recommend "House tile".


House tile is the most compatible products with your heating system without instability of dimension by heating system, House tile provide you more warmth and beautiful looks. In other words, you can bring practicality and beauty to your home. For more information please contact our sales team.



KW 5103

*주문시(Fine Grain Wood 全 패턴) 생산 가능합니다.

Antique Wood


 Dimensions 3.0(T) × 184(W) × 950(L)mm Packing 19pcs / 3.32m²
 Dimensions 3.0(T) × 7"(W) × 48"(L)mm Packing 15pcs / 3.25m²



KW 6001



KW 6002



KW 6003



KW 6011



KW 6012



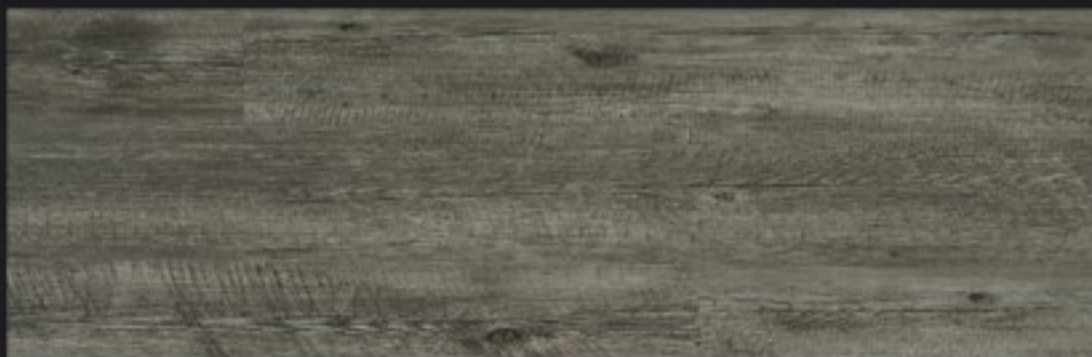
KW 6013



KW 6021



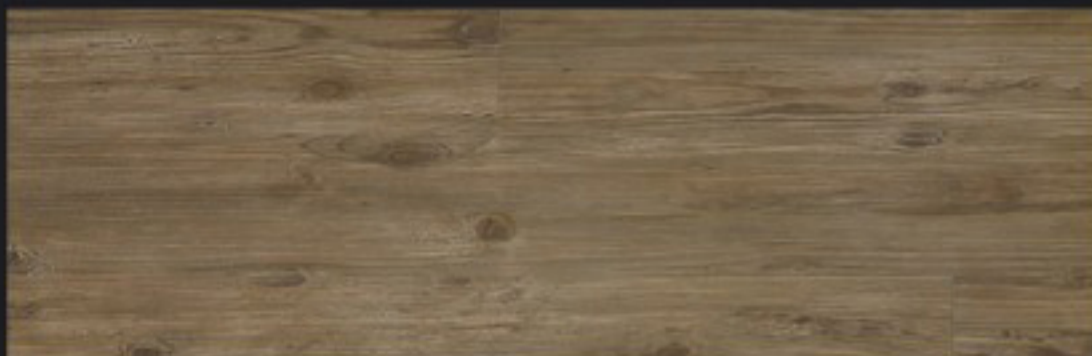
KW 6022



KW 6023



KW 6031



KW 6032



KW 6033



KW 6041

♣ 이 제품은 꽃무늬가 포함되어 있습니다.




KW 6043

♣ 이 제품은 꽃무늬가 포함되어 있습니다.

*본 카탈로그의 인쇄 색상은 실제 제품과 다소 차이가 있을 수 있습니다.

Antique Wood

 Dimensions 3.0(T) x 184(W) x 950(L)mm Packing 19pcs / 3.32m²
Dimensions 3.0(T) x 7"(W) x 48"(L)mm Packing 15pcs / 3.25m²



KW 6711

NEW



KW 6712

NEW



KW 6713

NEW



KW 6714

NEW



KW 6715

NEW



KW 6731

NEW



KW 6732

NEW



KW 6733

NEW



KW 6734

NEW




KW 6735

NEW

*These printed patterns can be different from real products in colors and feelings.

Antique Wood

 Dimensions 3.0(T) × 184(W) × 950(L)mm Packing 19pcs / 3.32m²
Dimensions 3.0(T) × 7"(W) × 48"(L)mm Packing 15pcs / 3.25m²



KW 6071



KW 6701

NEW



KW 6045



KW 6702

NEW



KW 6046



KW 6703

NEW



KW 6047



KW 6721

NEW



KW 6051



KW 6722

NEW



KW 6061



KW 6723

NEW



KW 6062




KW 6724

NEW

*본 카탈로그의 인쇄 색상은 실제 제품과 다소 차이가 있을 수 있습니다.

Fine Grain Wood

 Dimensions 3.0(T) x 184(W) x 950(L)mm Packing 19pcs / 3.32m²
Dimensions 3.0(T) x 7"(W) x 48"(L)mm Packing 15pcs / 3.25m²



KW 5011



KW 5012



KW 5013



KW 5015



KW 5025



KW 5111

NEW



KW 5112

NEW





KW 5113

NEW



*These printed patterns can be different from real products in colors and feelings.

Fine Grain Wood

  *제품 1장이 여러쪽으로 구성되어 있습니다.



Dimensions 3.0(T) × 184(W) × 950(L)mm

Packing 19pcs / 3.32m²

Dimensions 3.0(T) × 7"(W) × 48"(L)mm

Packing 15pcs / 3.25m²



KW 5121



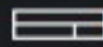
NEW



KW 6015



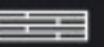
KW 5122



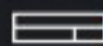
NEW



KW 6081



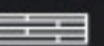
KW 5123



NEW



KW 6082



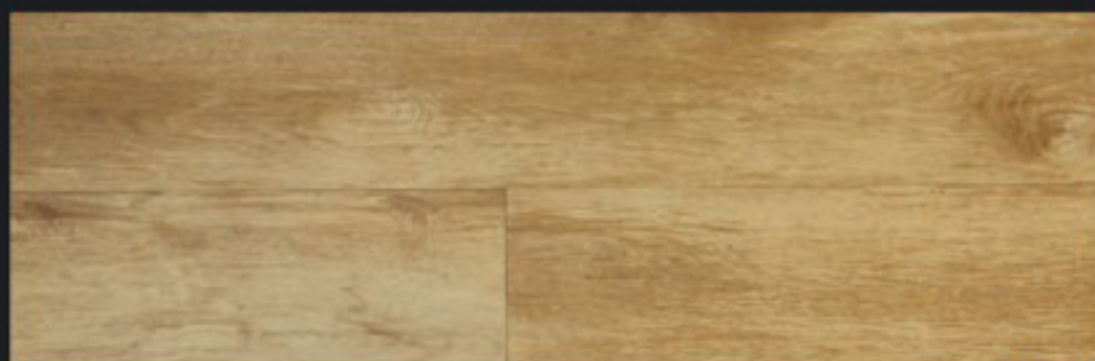
KW 5101

NEW



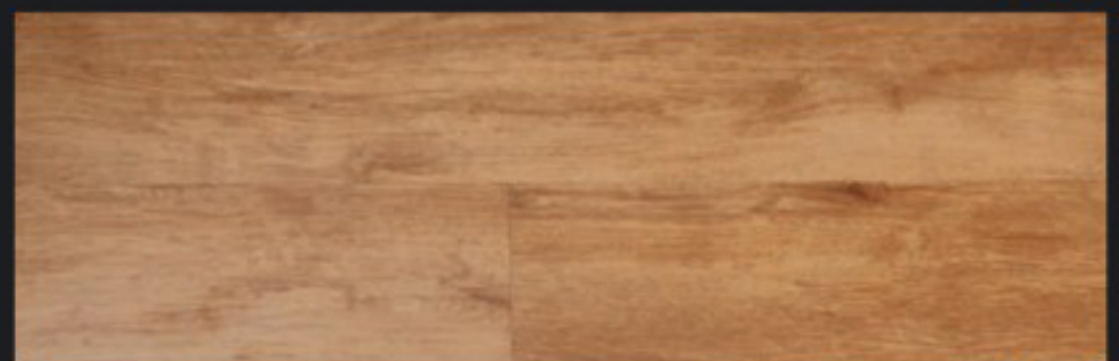
KW 5102

NEW



KW 5103

NEW



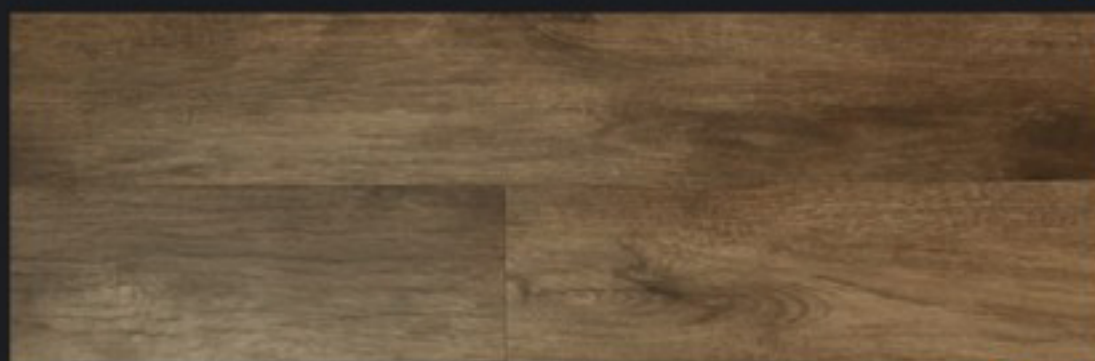
KW 5104

NEW



KW 5105

NEW



KW 5106

NEW



Stone

Dimensions 3.0(T) x 470(W) x 470(L)mm Packing 15pcs / 3.31m²



KCT 2101 **NEW**



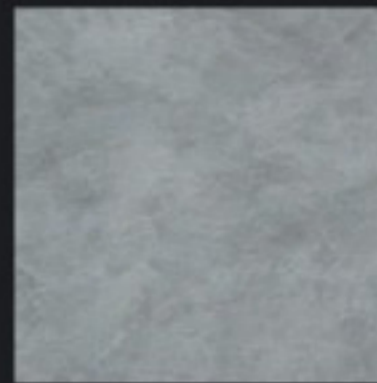
KCT 2102 **NEW**



KCT 2103 **NEW**



KCM 1611



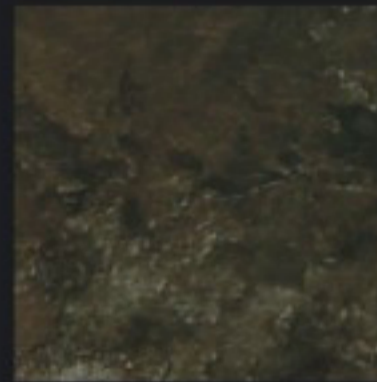
KCM 1612



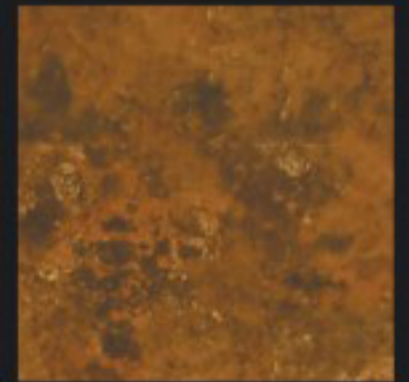
KCM 1613



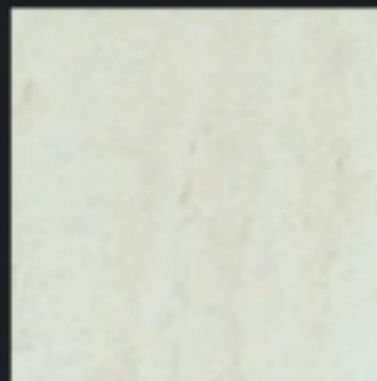
KMT 1411



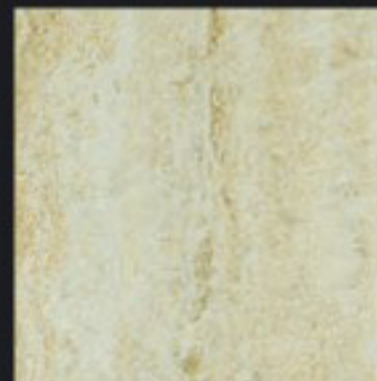
KMT 1412



KMT 1413



KT 2701



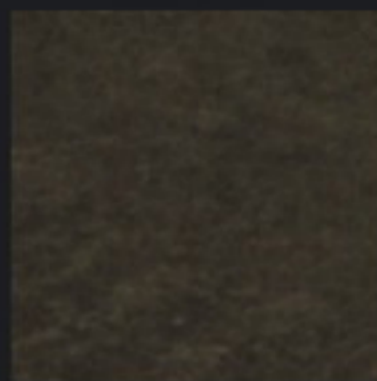
KT 2702



KT 2703



KCM 1601



KCM 1603



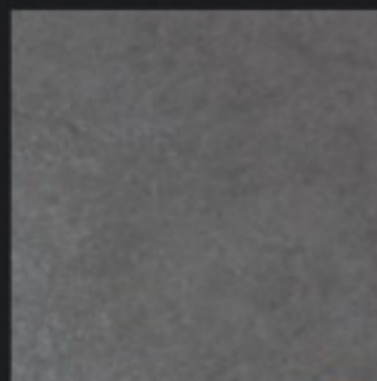
KG 1801



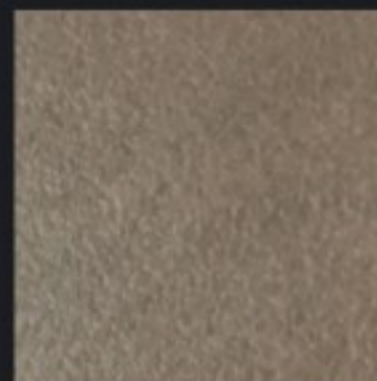
KG 1802



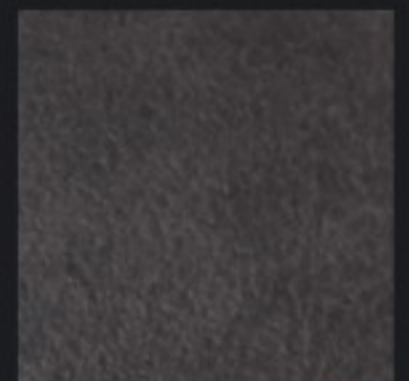
KCT 2201 **NEW**



KCT 2202 **NEW**



KCT 2203 **NEW**

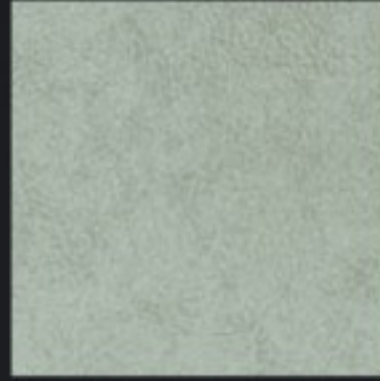


KCT 2204 **NEW**

*본 카탈로그의 인쇄 색상은 실제 제품과 다소 차이가 있을 수 있습니다.
*These printed patterns can be different from real products in colors and feelings.

Abstract

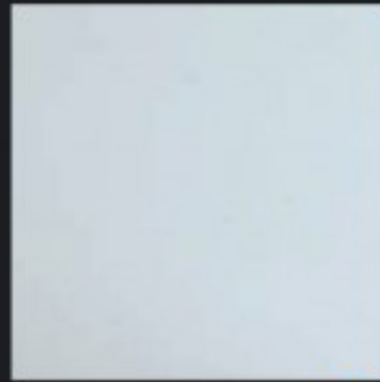
Dimensions 3.0(T) x470(W) x470(L)mm Packing 15pcs / 3.31m²



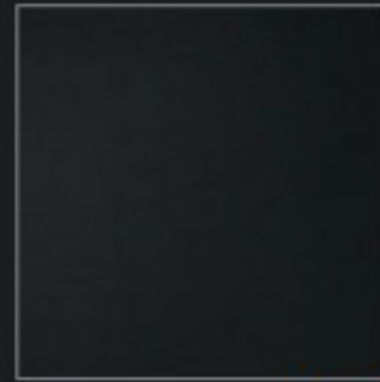
KL 3301 NEW



KL 3302 NEW



KS 3401 NEW



KS 3402 NEW



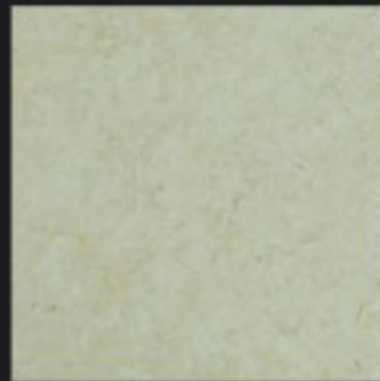
KF 3501 OA NEW



KF 3502 OA NEW



KF 3503 OA NEW



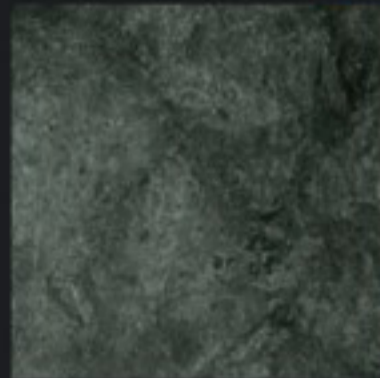
KM 3101 NEW



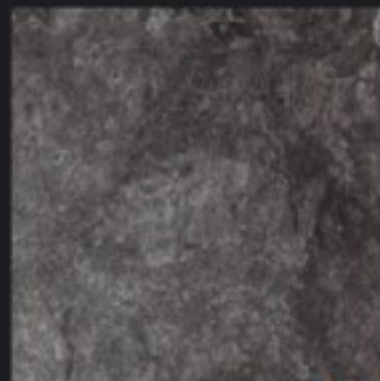
KM 3102 NEW



KM 3103 NEW



KM 3202 NEW



KM 3203 NEW



KM 3201 NEW

Carpet

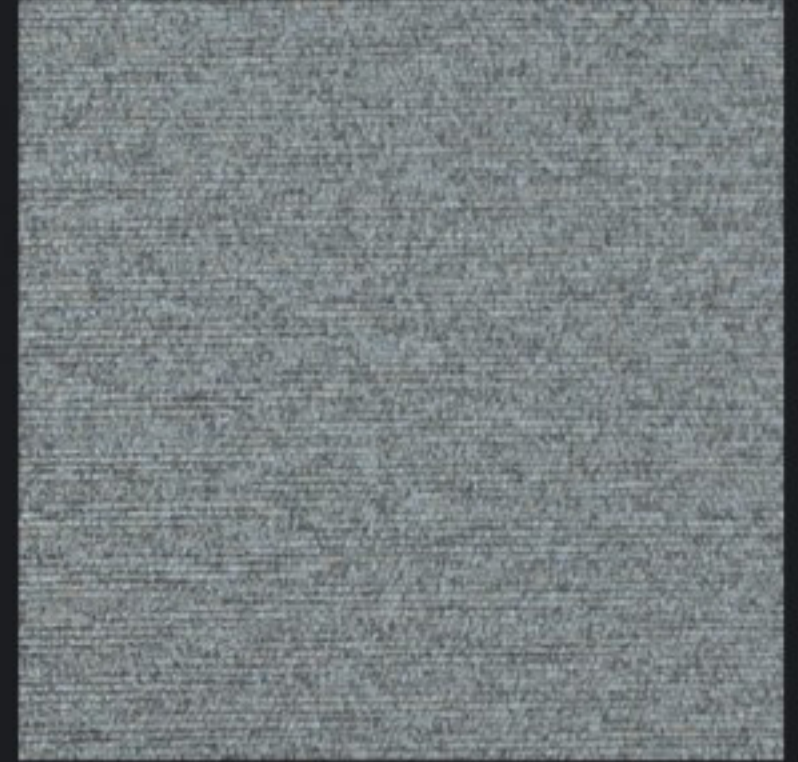
Dimensions 3.0(T) x470(W) x470(L)mm Packing 15pcs / 3.31m²



KC 1242 0A NEW



KC 1243 0A NEW



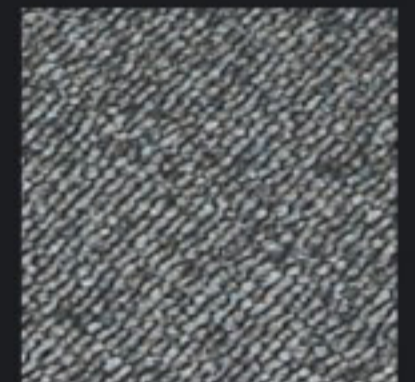
KC 1241 0A NEW



KC 1244 0A NEW



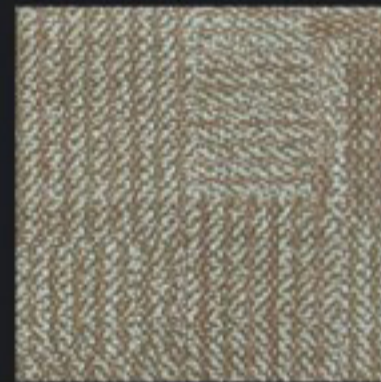
KC 1201



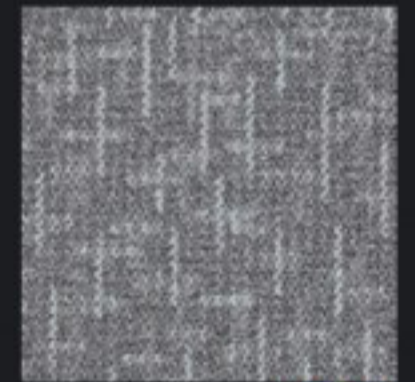
KC 1203



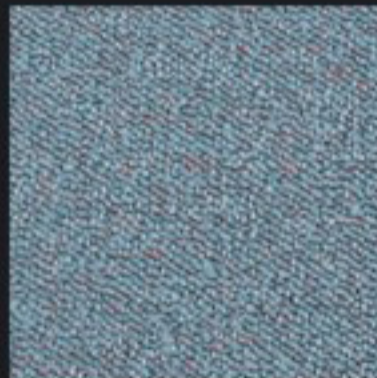
KC 1221



KC 1222



KC 1251 NEW



KC 1231



KC 1232



KC 1233



KC 1212



KC 1213



KC 1261 NEW



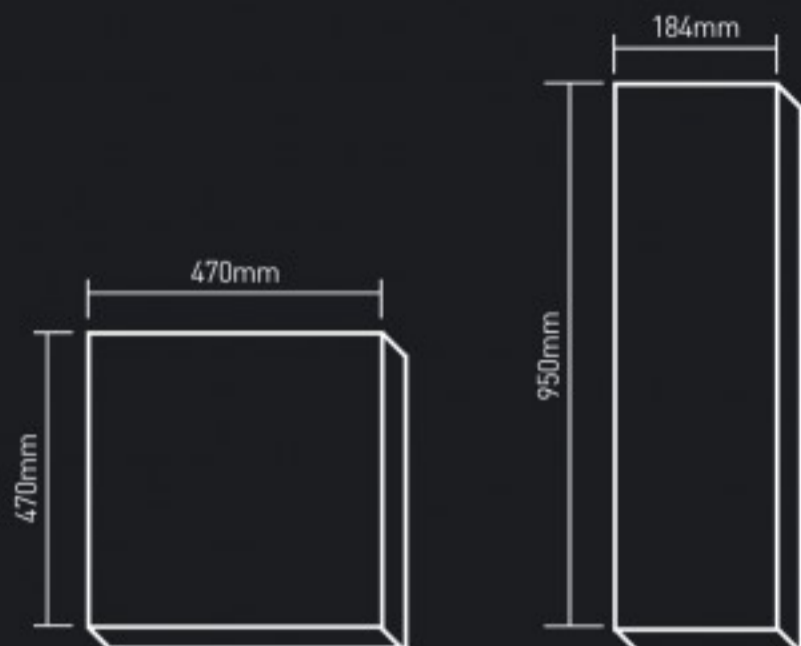
KC 1262 NEW

*본 카다록의 인쇄 색상은 실제 제품과 다소 차이가 있을 수 있습니다.
 *These printed patterns can be different from real products in colors and feelings.

Smart flooring solution
 with **UNIDECO**

Product Specifications & Technical Data

Size



Adhesive

■ Acrylic latex based adhesives

[Commonly called as Acryl adhesive]

- Applied over the sub-floors so that its surface retains almost no moisture.
- As it is non-toxic and a soft adhesive power, it provides for easy maintenance following installation.
- Use 1/8 inch notched steel trowel when applying.

■ Chemically Engineered Resin Based Adhesives

[Commonly called as Urethane adhesive]

- Provides moisture and alkali resistance over non-porous surface.
- Use 1/8 inch notched steel trowel when applying.

■ Thermosetting Epoxy Adhesives

[Commonly called as Epoxy adhesive]

- Recommended for use in places subjected to excessive heat or being cold and damp.
- To be mixed in unequal quantities of two parts epoxy resin immediately prior to application.
- Use 1/16 inch notched steel trowel when applying.

Specific Measurement of UNIDECO

WIDTH X LENGTH		CONTENT CARTON		
mm	Inch(″)	PCS	sqm(m ²)	sqft(ft ²)
470x470	18.5x18.5	15	3.31	35.6
184x950	7.2x37.4	19	3.32	35.7
176x940	6.9x37.0	10	1.65	17.75
178x1220	7.0x48.0	15	3.25	34.97
152x914	6.0x36.0	24	3.35	36.04

Cargo Shipping Information(Based on 20ft Container)

WIDTH X LENGTH (mm)	NOMINAL OVERALL THICKNESS		
	3.0mm		
	pcs/carton	cartons/pallet	Pallets/20ft
470x470(18″.5x18.5″)	15	100	10
184 x 950(7.2″x37.4″)	19	100	10
176x940(6.9″x37.0″)-Click	10	100	10

The Weight per Unit -Classified by Thickness

THICKNESS	KILOGRAM(kg)			POUND(lb)		
	/ft ²	/ m ²	/carton	/ft ²	/ m ²	/carton
Wear/overall						
0.3/3.0	0.46	5.03	16.7	1.01	11.09	36.82
0.5/3.0	0.44	4.76	15.8	0.97	10.50	34.83
0.7/3.0	0.42	4.58	15.2	0.93	10.10	33.51
1.0/3.0	0.44	4.79	15.9	0.97	10.56	35.05

Stain&Chemical Resistance(KSM3802.,24hr-Exposure)

MATERIAL	RATING	MATERIAL	RATING
95% Ethyl Alcohol	0	Nitric Acid 70%	1
Cement Paste	0	Sulfuric Acid 96%	1
10% Ammonium Hydroxide	0	Methylene Chloride	2
Milk	0	Soy Sauce	0
5% Acetic Acid	0	Soy Bean Oil	0
5% Hydrochloric Acid	0	Lubricant	0
Kerosene	0	Coffee	0
Sesame Oil	0	Tea	0
Acetone	2	Ketchup	0
Nail Polish Remover	2		

Technical Data of UNIDECO

Type&Composition		PVC Laminated Floor covering
Application		Commercial, Residential
Surface treatment		PU&Anti-bacterial, per design
Profile		Beveled / Non-beveled, per design
Tile Size(mm)	EN427	470x470, 184x950, 176x940
Total thickness(mm)	EN428	3.0, 5.0
Wear layer thickness(mm)	EN429	0.3 0.5 0.7 1.0
Classification	EN685	21 23/31 33/42 34/43
Fire rating	EN13501-1	Bfi -S1
	ASTME648	Class1
	ASTME84	75orLess
	Mekel Burner Test	Pass
Heat Stability	KSM3802	0.3mm/0.01″[80°C+2°C, 6hr/hr]
Abrasion resistance	ASTMD3884	0.1% Loss
Slip resistance	ADA	Exceeds ADA requirement
Static Coefficient of Friction	ASTMC1028	Dry:0.72(≈V0.50)
		Wet:0.67(≈V0.50)
Residual indentation	EN433	≥6
Color fastness	ISO 105-B02	≥6
Dimensional stability	EN434	
Flexibility	EN435	
Electric behavior	EN1081	

■ Preparations

1. The surface of the floor must be completely dry. Please note that even though the floor may appear dry, it may still retain moisture. Moisture testing is a mandatory step in subfloor preparations.
2. In newly constructed buildings, it is necessary to dry the flooring surface for 7 to 14 days prior to application to ensure that no moisture is retained in cement surfaces.
3. Any polish, paint, dirt, etc. must be completely removed from the floor before installation. Dry mop and sweep the entire floor to remove surface sand, soil, and debris.
4. Ensure that the floor surface is flat and level. Use a scraper to flatten the floor surface or a putty knife to remove gum and/or labels.
5. Maintain the room temperature above 15 °C(59 °F) before installation. Adhesive and flooring products must be kept in the same environment for at least 24 hours before installation begins.
6. Use only UNIDECO recommended adhesives

■ Installation

1. Prepare all rulers, cutters, adhesives, spreaders, and compass dividers before commencing work.
2. Check that all application products are of the same batch/lot number.
3. Find the exact center of the floor by marking vertical and horizontal lines across the floor.
4. Measure the squareness of the marked lines, and then start applying adhesives on the first quarter of the marked floor space.
5. Work on small portions of the floor at a time, and apply adhesives accordingly. Optimum usage of adhesive is 0.3 to 0.45kg per square meter.
6. Approximately 20 to 30 minutes after applying adhesive, lay the flooring products.
7. Keep a distance of 1 mm from the wall and the edge of the flooring products. Press products down firmly so that the product lies flat on the ground.
8. As the adhesives are highly flammable, avoid any contact with sparks or open flames.
9. As the adhesives dry quickly, remove excess adhesive immediately by using alcohol or alkali water.

■ Maintenance

1. In order to allow the flooring adhesives time to cure, restrict traffic and do not move furniture onto a newly installed floor for at least 24hours after installation. Additionally, allow at least 3 days after installation before washing a newly tiled floor.
2. Be careful not to put any dents or marks on the floor when moving heavy furniture.
3. Furniture polish and/or rubber supports may leave stains on the floor surface over a long period of time. Check the bottom of furniture to ensure it is clean before moving it on to the new floor.
4. The application of surface dressing is a function of the floor usage. Under high traffic conditions, the dressing should be stripped and reapplied every one or two months. However, under general household conditions, this may only need to be done once every six months.
5. When removing stains and polish, do not use strong solvents or household cleaning fluids. Instead, use widely known alkali water based floor polish removers and cleaner.

시공 및 관리요령

■ 시공시점

- 바닥 난방(온돌)이 들어가는 장소는 반드시 시공하기 전 7일이상 정도 난방을 해 주어야 합니다. 시공전에는 난방을 중단하고 시공이 끝난 다음 2일정도 지난 후 난방을 하는것이 좋습니다.
- 바닥 표면의 돌출부, 이물질, 페인트, 니스 등 모든 잡티를 제거하여 평탄하고 깨끗한 상태로 만듭니다.
- 시공할 타일이 동일 로트인지 확인하여 주십시오.

■ 시공장소 온도

- 시공할 바닥은 물론 실내 공간 전체가 21℃에서 30℃사이의 일정 온도를 유지할 수 있어야 합니다.

■ 바닥상태

- RAM수분 측정기로 측정한 수분 함량이 기준치(1.36kg/93m²/24시간)이하 라야 합니다. 간이 측정방법은 투명비닐을 깔고 24시간 후 물방울이 맺히는 정도를 보고 판단 하는 방법이 있습니다.
- 바닥이 모래 및 시멘트 분진, 크랙이 없는지 확인하여 시공해 주십시오. 접착불량의 원인이 될 수 있습니다.

■ 접착제 선택

- 시공할 바닥의 상태에 따라 알맞은 접착제를 선택해야 합니다. 습기가 배어 있거나 바닥이 난방(온돌)인 경우에는 반드시 우레탄 접착제로 도포해야 합니다. 아크릴 접착제는 5℃이하의 낮은 온도에서 장시간 보관 할 경우 접착력이 떨어질 수 있으므로 사전 확인 바랍니다.
- 접착제는 당사 지정 접착제를 사용하여 주시기 바랍니다.

■ 정기관리

- 무거운 가구등을 운반할 때에는 찍히거나 흠이 나지 않도록 조심합니다.
- 왁스 코팅 주기는 통행이 많은 곳은 1~2개월에 1회, 보통 가정집에는 6개월에 1회 정도가 좋습니다.
- 때가 묻었거나 왁스가 오염이 되었을 때에는 솔벤트나 강한 세척제를 쓰지 말고 약한 알카리 세정제나 전용 크리너로 세척, 건조한 후 재코팅 합니다.
- 자세한 정기 관리 요령은 기술 매뉴얼을 참고하여 주십시오.

■ 시공후 관리사항

- 시공 후 가구 운반시 표면 보호를 위하여 바닥 보호 매트지를 깔아야 합니다.
- 시공한 타일이 제대로 붙을 때까지 24시간 이내에는 보행은 물론 가구 운반 등을 삼가야 합니다. 또한 시공 후 3일까지는 물청소를 금해야 합니다.
- 표면에 굳어진 접착제는 왁스를 칠하기전에 나일론 수세미로 가볍게 닦아냅니다.
- 바닥이 깨끗하고 건조한 상태가 되면 깨끗한 마포를 소량의 왁스에 적셔서 일정한 간격, 일정한 방향으로 고르게 도포합니다.
- 왁스의 건조 시간은 왁스의 종류와 습도 및 기온에 따라 다르므로 미리 확인해야 하고, 건조가 덜 된 바닥을 절대로 밟아서는 안됩니다.